

Available Upgrades for Valmet Furnace IR Cameras

- Higher Resolution Image
- Higher Contrast Image
- New Wireless Capability
- Reduced Air Consumption
- Improved Image Processing Tools
- Maintenance Agreements Available

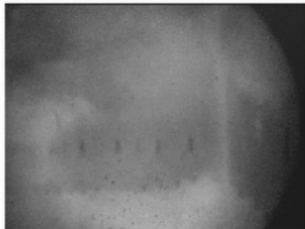


Upgrade to Higher Resolution Camera Core:

Learn more at www.valmet.com for more information. You can now gain even greater results from your Valmet Furnace infrared inspection camera. Featuring the latest core technology, the Valmet Furnace IR-Core3 Upgrade Program is an easy way to achieve the most advanced online visibility and temperature analysis without incurring the costs of replacing your existing equipment. We're offering this new core as a proactive way to help our customers enjoy best-in-class performance. We recommend upgrading any camera that has been in the field two years or longer.

IMAGE EVOLUTION

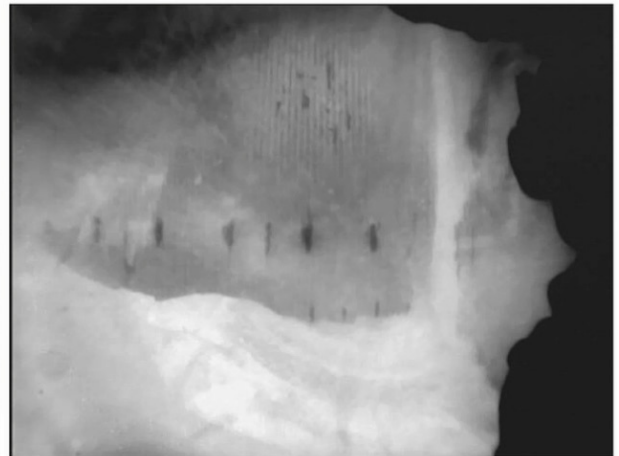
Our new detection core materials deliver improved pixel uniformity resulting in crisper images — See images below.



1st Generation: 320 x 240 Resolution, Grainy with Low Contrast



2nd Generation: 320 x 240 Resolution, Clear but Lacking Fine Detail



3rd Generation: 640 x 480 Resolution, Crisp & Clear with Great Contrast

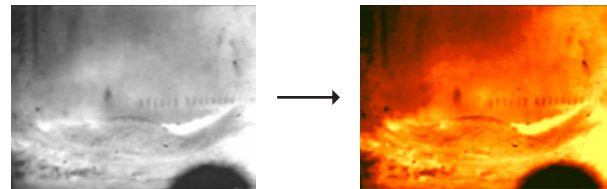
How the Valmet Furnace IR-Core3 Upgrade Program works:

1. We arrange shipment of your current camera to our dedicated service facility. The upgrade process is fast, but we're glad to provide a loaner camera for uninterrupted performance.
2. We refurbish your camera with the new core, provide one new lens tube adaptor, and ship them back with instructions for easy replacement into your system.

Upgrade to Proprietary Image Processing Software:

The Valmet Furnace Camera System has the option to include our Digital Viewer (DV) or TempSentinel Through-The-Lens Pyrometer (TLP) Image Processing Software. Viewer provides colorization and integration into plant system. The addition of the Pyrometer allows for accurate temperature measurements in real time which can be transmitted to the DCS via 4–20mA signals. The software includes the following features:

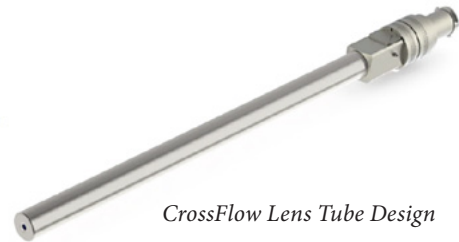
- Video ColorizationDV & TLP
- Timed Video & Image Capture.....DV & TLP
- 8 User-Defined Temperature Zones TLP
- Measures Temperatures from 1000–3000°F TLP
- Automatic Disc Space Management.....DV & TLP
- Accepts Multiple IP Video Streams.....DV & TLP
- Easy to use InterfaceDV & TLP
- PC-Based Platform for Local or Remote ViewingDV & TLP
- IP Video Signal Allows for Simple Plant-Wide Video System Integration.....DV & TLP



Black & White or Colorized Image

Upgrade to Valmet Furnace CrossFlow Lens for 120° Field of View Lens Tubes:

- 50% reduced air-flow requirement compared to standard lens, but with same cooling effect.
- Less compressed air offers immediate return on investment and lowers operating costs.
- Lens tip air-flow pattern significantly reduces need for lens tip cleaning procedures.
- Patent-pending innovative design.



CrossFlow Lens Tube Design

Cooling Air Requirements & Comparison

For CrossFlow Lens:

=> Consumption < 60 SCFM (1699 L/min) at 60 psi

For Standard SL Lens:

=> Consumption 110 SCFM (3115 L/min) at 60 psi



Value your Equipment with a Maintenance Agreement:

- Ensure your Camera Equipment is maintained properly and running consistently.
- Help fix problems before they become critical.
- Flexible plans available to meet your plant's needs.
- Training support for operators.
- Get discounts on spare parts.

Upgrade to a Wireless Tablet:

- Full Featured Rugged Windows Tablet
- Certified to MIL-STD 810G, IP65 and MIL-STD-461F Standards
- View, Record, and Take Snapshots of the Live Video Feed
- Wireless Range of up to 50 feet*
- 3 Year Bumper to Bumper Warranty
- Allows for Glove or Pen Touch Mode
- High Level of Brightness Allows for Viewing In all Conditions
- Optional Spare Hot swappable Battery
- Includes Hand Strap for Ease of Use and Mobility
- Full Size USB Port for Easy File Transfer
- Sharp 11.6" HD Screen
- Up to 8 Hours of Battery Life



*Wireless range can vary based on environment

