

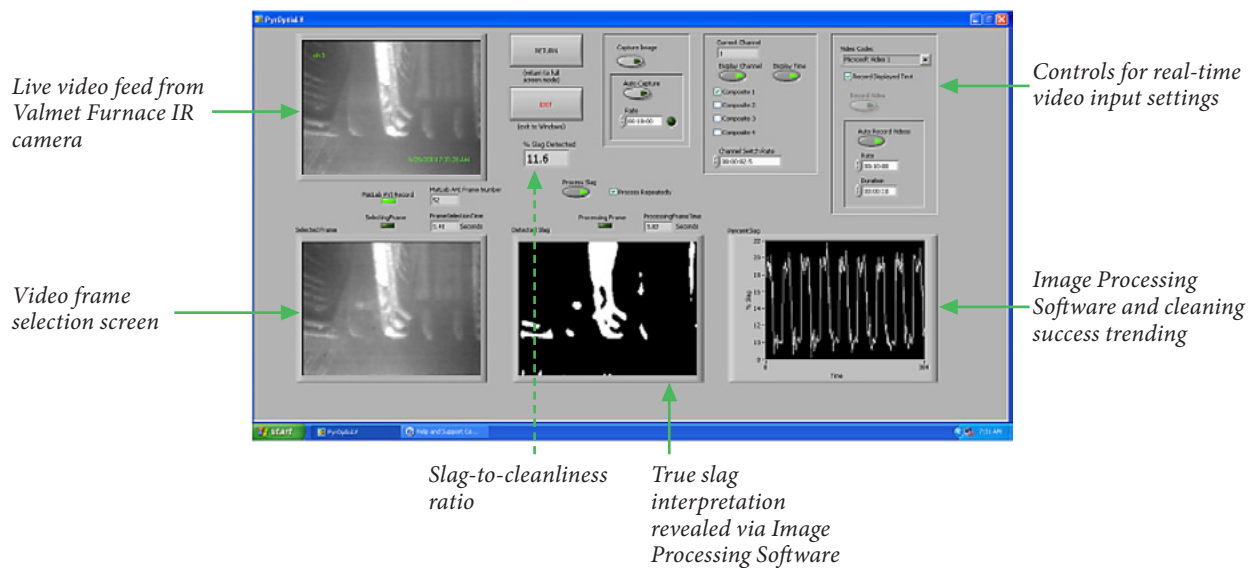
# Valmet Furnace Image Processing Software

Enhance the efficiency of your boiler cleaning operations with Image Processing Software.

The key to achieving the greatest accuracy and efficiency of your boiler cleaning operations is to improve the quality of your inputs. Whether your controls are sequenced, timed or managed by your intelligent sootblowing system (ISB), the Valmet Furnace Image Processing Software Monitoring System provides an

innovative and vital input to your controls. A real-time Image Processing Software precisely quantifies slag buildup in a given boiler view, and a full dashboard of live-feed information gives you an immediate view of boiler conditions and important historical data.

## The Image Processing Software Dashboard



## Increase the effectiveness of your current sootblowing system:

Your sootblowing system benefits from the optimization of input sensors, software and cleaning devices that are maximized for boiler efficiency and availability. By incorporating the superior input data available from Image Processing Software, your system can achieve even greater benefits and savings.

- **Measure the numerical representation** of visual plugging and fouling
- **Quantify and pinpoint slag buildup** conditions before they cause major damage
- **Decrease erosion and increase tube life** by reducing unnecessary spray rates and thermal shock
- **Boost energy efficiency** by reducing sootblower use to when and where it's needed
- **Improve unit heat rate**, stabilize RH and SH temperatures and lower emissions

## Superior Inputs for Better Cleaning Cycles

**Incorporating live input about slag conditions will help improve the efficiency of your cleaning operations.** Knowing in real-time the “slag vs. cleanliness” conditions throughout your boiler enables the system to schedule the most efficient sootblowing cycles. With the Image Processing Software dashboard, you never have to manually predict boiler conditions. The active-view reporting tools, as well full historical data, helps operators track boiler conditions to more accurately tune boiler cleaning schedules and tools.

**SlagIndex can enhance your existing sootblower controls.** The Furnace Image Processing Software Monitoring System is a software product that works as a standalone system or in conjunction with your existing sootblower controls. It can be readily integrated with PLC-based controls and can also be used to enhance ISB software from third-party manufacturers. It enables you to access vital information about realtime boiler conditions and improve the efficiency of your boiler cleaning operations.

## How Image Processing Software Works

Image Processing Software image processing software delivers real-time views of slag conditions in you critical boiler areas. From tube walls, to pendants and the superheater entrance, Image Processing Software software determines the ratio of a clean condition to a slagged condition. This condition ratio is then sent as an independent or added signal to the boiler cleaning controls to enable more effective cleaning of your boiler areas.

## Valmet enables you to monitor developments anywhere in your combustion chamber.

Valmet provides a valuable suite of advanced imaging and measurement tools that helps you proactively manage your boiler. Valmet Furnace infrared inspection cameras deliver superior online visibility and temperature analysis.

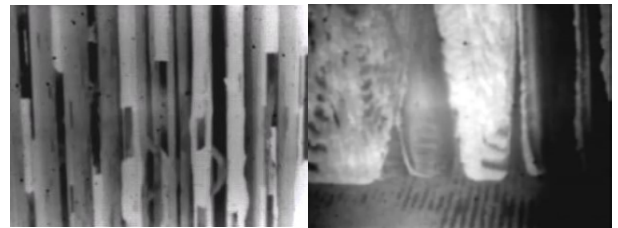


*Valmet Furnace IR Camera Installation*



*Valmet Furnace Mobile IR Camera*

Valmet IR fixed installation camera is designed for easy transformation into a mobile camera. This powerful dual-purpose camera provides greater inspection benefits and economic efficiency. Used in combination with the Valmet Furnace Image Processing Software Monitoring System, you can track in real-time the precise slag and fouling conditions of your boiler superheater and tube walls.



*Clear and reliable video signal extracted data across a wide range of ash flows and power levels.*