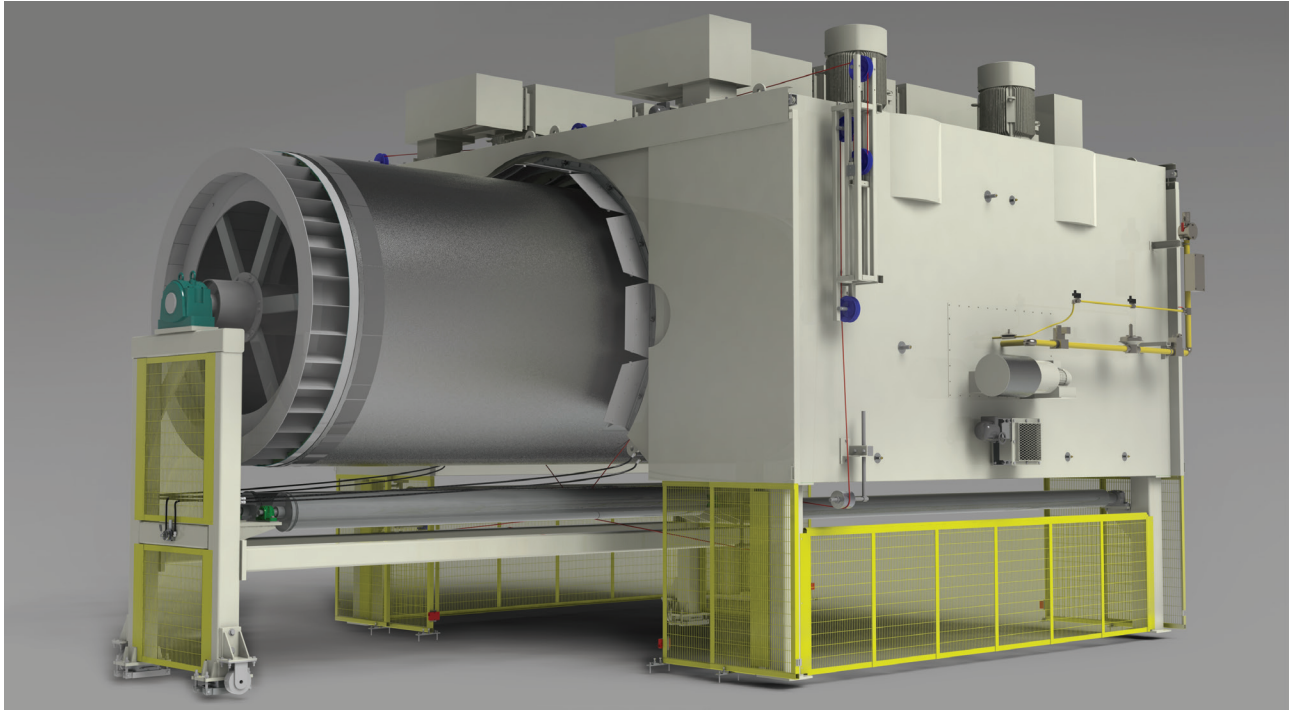


Classic Hydro-Dry®

Compact dryer system for nonwovens

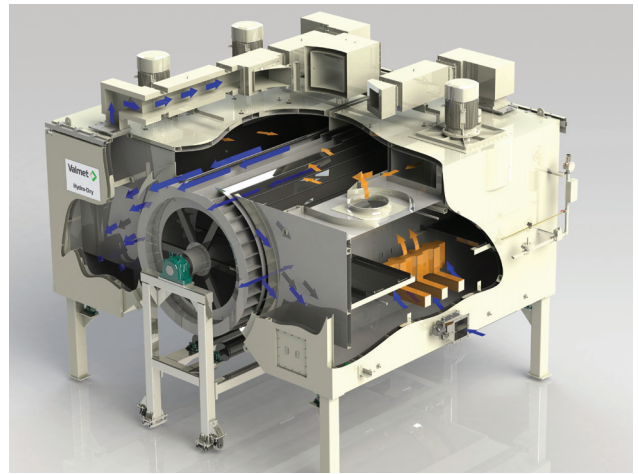
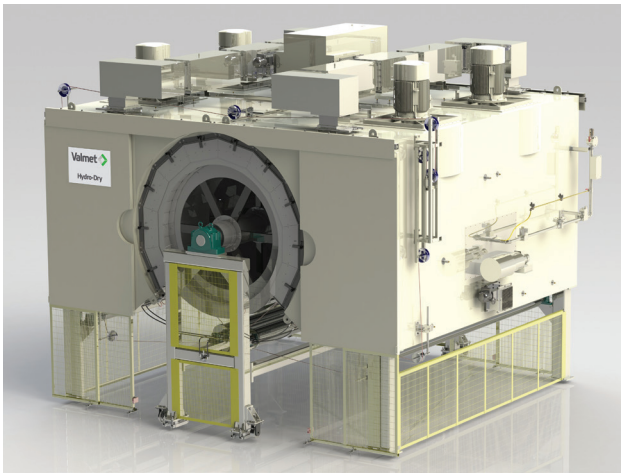


Hydro-Dry is a compact dryer with an integrated air system, economical construction and easy installation. This dryer system is designed to provide optimum, cost effective, drying solutions.

Hydro-Dry benefits

- Low power usage which is attained through the highest thermal efficiency, achieved by combining the high air re-circulation design and the balanced closed thermodynamic loop.
- High strength roll construction permits:
 - maximum of process air with negligible pressure loss.
 - minimal load and thermal deflection.
 - minimal maintenance.
- The “roll-out” design allows for access to both the roll surface and the hood for easy maintenance.
- The self contained unit controls installation costs through:
 - consolidated, overall system size
 - minimizing roof and wall penetrations
- Dual air chambers with separate burners allows for two temperature zones so, if need be, the web can be heated and cooled at different times in the drying cycle.
- The integrated air system:
 - reduces the distance that the air has to travel which in turn reduces the amount of power used.
 - allows for dual temperature chambers.

Valmet, manufacturer of Honeycomb® products, has set the standard in the nonwovens and paper industries. Only Valmet combines extensive experience in Thru-Air® drying with performance, quality and price.



Features

Primary Product Usage	Drying of Hydro-entangled webs
Diameters	2.0 & 2.8 m (~ 9 ft) standard
Width	2.5, 3.0, 3.5, 4.0, 4.5, 5.0, 5.5, 6.0 m standard. Special widths available.
Designed Basis Weight of Product	30- 150 gsm
Roll Construction	Honeycomb Thru-Air are made from high strength, carbon steel with a stainless steel mesh shell surface. This roll construction offers unique advantages for drying; Maximum re-circulation of process air with negligible pressure loss and minimal load and thermal deflection.
Maintenance	The system is easily installed and requires minimal maintenance. When maintenance is required the "roll-out" design allows for easy access to both the roll surface and the hood.