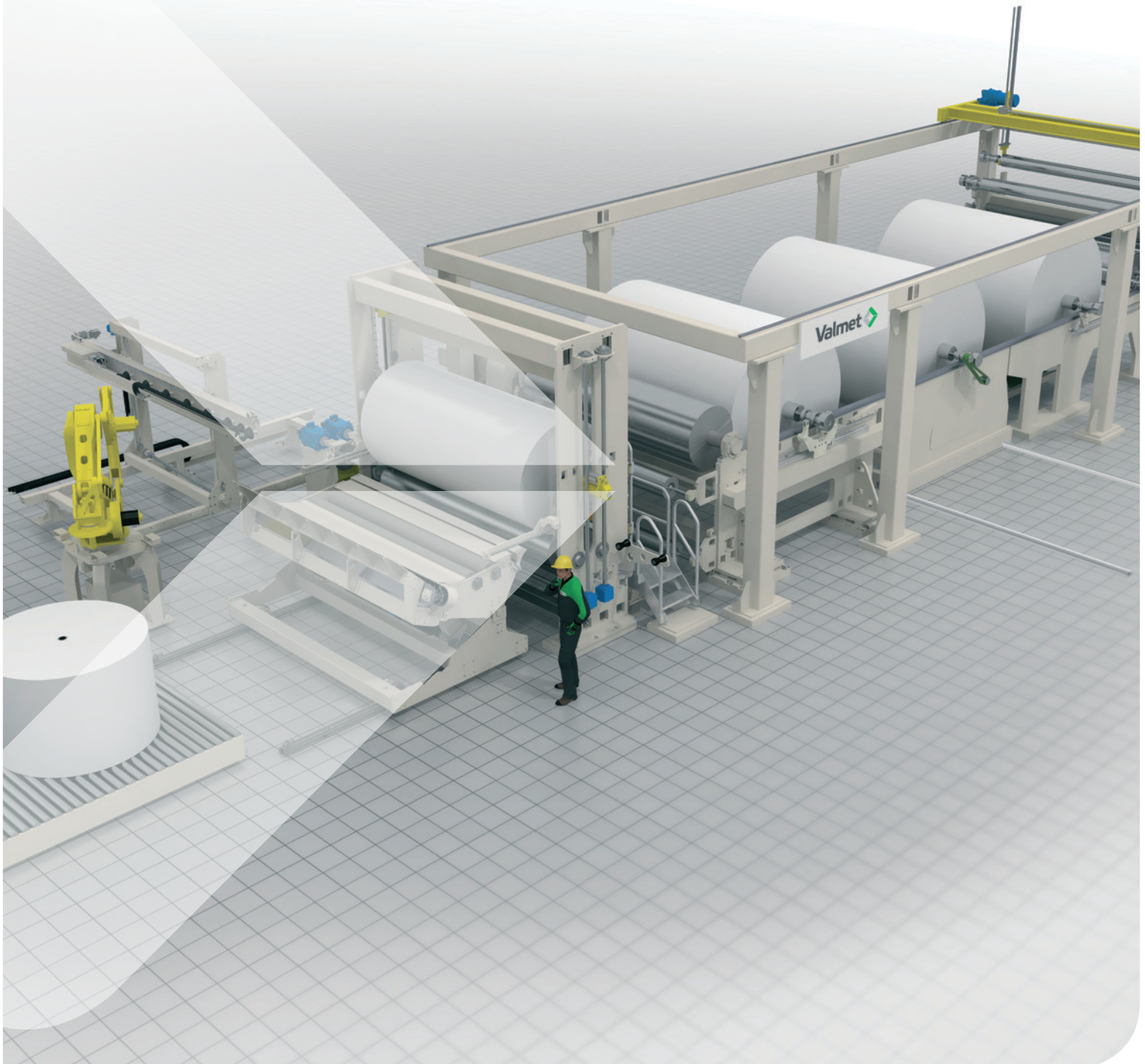
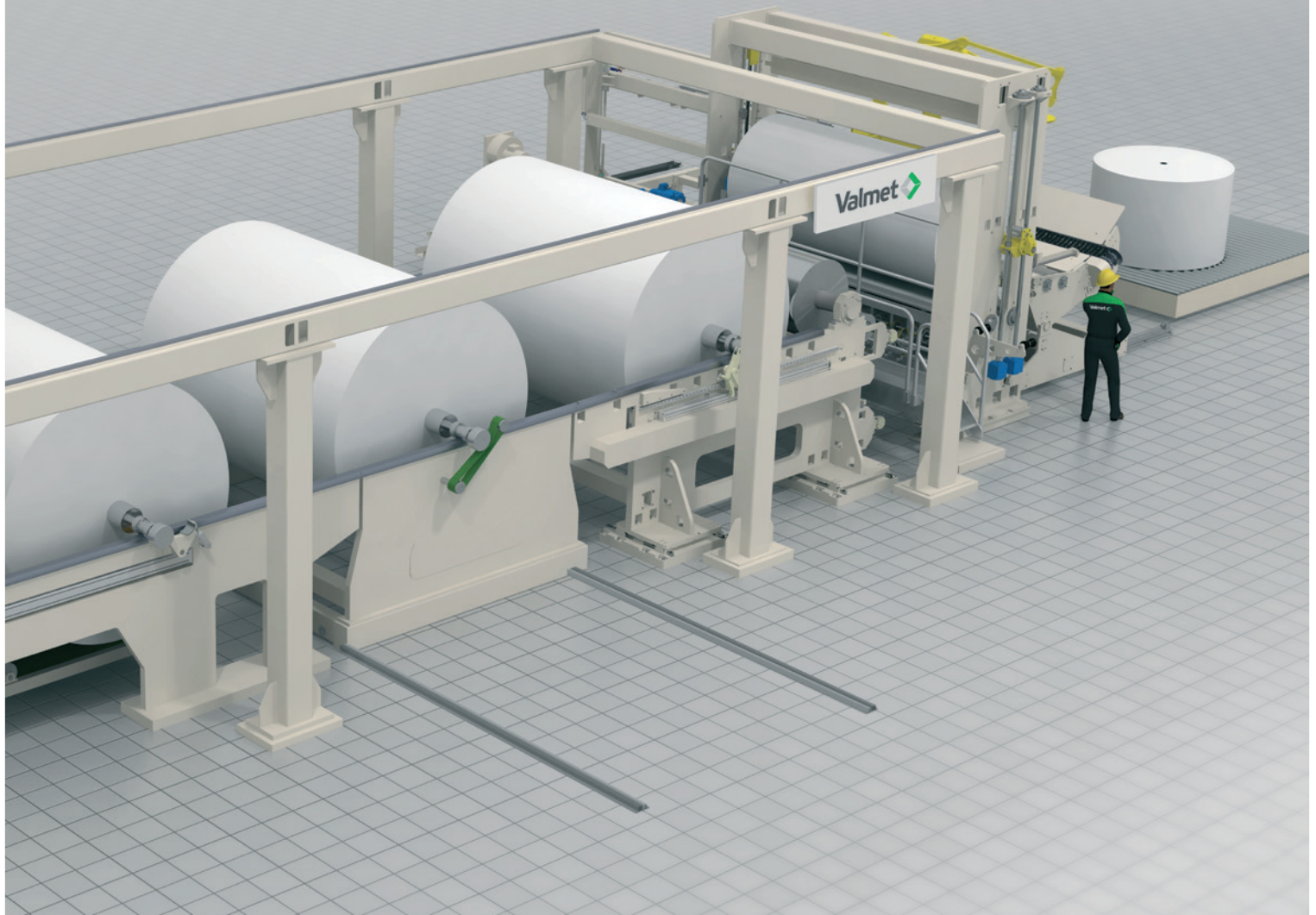


## Focus Nonwovens rewinding lines

Innovative solutions and proven technology for best rewinding





## The global leader in high performance winding, THRU-AIR<sup>®</sup>, and web handling technology

Valmet offers a new generation of winding technology for nonwovens production including winders, slitting rewinders and packaging system. Together with nonwovens makers we are constantly striving to optimize the technical solutions and daily operations in order to increase production capacity. The F(O)CUS technology ensure that parent reels are handled and converted in a way that preserve as much of the initial nonwovens properties as possible to maximize product quality.

**Let's move Forward to become Best in Nonwovens!**

# Focus Nonwovens Winders

The electromechanical Focus Winders are equipped with a tension control system, assuring big dimension rolls with high density, preserving the material characteristics. The proven control system and algorithm to manage relieving action have been verified and tested in numerous installations.



Model	Width	Drums	Relieving type	Nip control	Max reel	Reel changing
VNW 400	Up to 4000	750	Hydraulic Electromechanical as option	Curves set in control system, changeable. Electromechanical is automatic	2500	Automatic
VNW 1000	Up to 6000	900	Electromechanical	Curves set in control system, changeable or automatic mode	3500	Automatic
Drive and control system						
Sectional AC motor system with regenerative power unit. Plc easy debugging maintenance, Motion control for all axis, Safety Plc included						

# Focus Nonwovens Slitter Rewinders

The F(O)CUS technology offers a new generation of high quality nonwovens winding systems based on high precision, product care and high efficiency which enables increased capacity. The typical F(O)CUS electromechanical relieving approach has been developed into the completely automatic system no-stress, including finished reel removal and off-loading operations.



Model	Width	Drums	Relieving type	Nip control	Max reel	Reel changing
VNR1000	Up to 6000	600	Electromechanical	Curves set in control system, changeable by operator or automatic	Locknuts or pneumatic Ø 3" - 6"	Manual with trolley or Automatic
VNR 1500	Up to 6000	750	Electromechanical	Curves set in control system, changeable by operator or automatic mode	Locknut or pneumatic Ø 3" - 6"	Automatic
Drive and control system						
Sectional AC motor system with regenerative power unit, Plc easy debugging maintenance, Motion control for all axis, Safety Plc included						



Valmet's professionals around the world work close to our customers and are committed to moving our customers' performance forward – every day.

#### Contact us

Valmet Pescia, Italy  
Tel.: +39 0572 429053

Valmet AB, Karlstad, Sweden  
Tel.: +46 54 171 000

Valmet S.p.A, Gorizia, Italy  
Tel.: +39 0481 528 311

Valmet Inc, Biddeford, USA  
Tel.: +1 207 282 1521

Valmet Inc., Norcross, USA  
Tel.: +1 770 263 7863

Valmet Ltd., Beijing, China  
Tel.: +86 1065 6666 00

e-mail: [tissue.info@valmet.com](mailto:tissue.info@valmet.com)

[www.valmet.com](http://www.valmet.com)