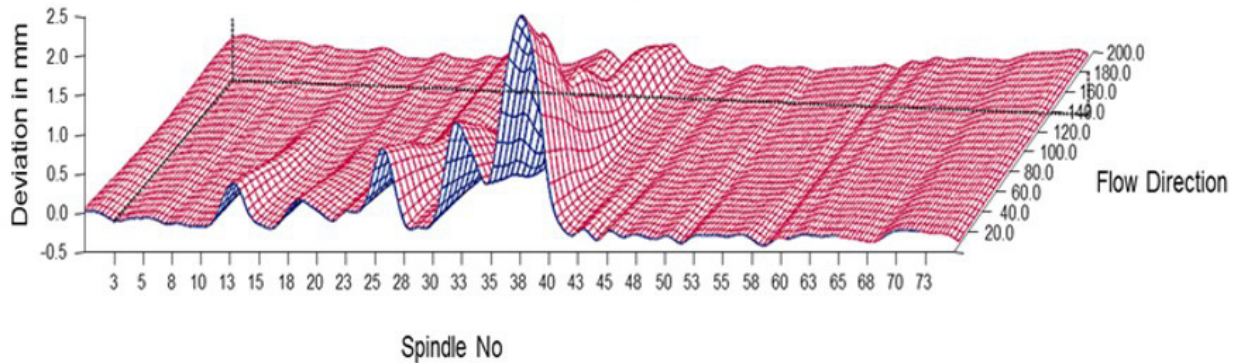


Headbox condition testing

Return headbox performance to the original level



Servicing the headbox has become increasingly important because of the requirements of improved machine runnability and paper and board quality. With Valmet's headbox condition testing service, you can identify the faults and deviations, and ensure high-quality servicing.

Benefits

- Identifies reasons for profile problems
- Accurate maintenance estimation
- Minimized unplanned shutdown

Service description

Valmet's headbox condition testing consists of a comprehensive set of measurements, checks and optional studies. The testing concerns the mechanical condition, automation and process aspects. All types of headboxes are tested by Valmet's headbox service specialists.

| | |
|------------------------------|-----------------------|
| Recommended service interval | 2 years or need-based |
| Duration of full service | 10–12 hours |
| Performed during shutdown | 10–12 hours |
| Performed during operation | – |

Scope of service

A typical testing includes:

Measurements

- Apron 3D mapping
- Headbox alignment
- Top frame alignment
- Top frame movement
- Slice opening profile

Checks

- Apron condition
- Top slice lip condition
- Movement gears condition
- Limit switches and sensors functioning
- Frame corrosion
- Top frame pivot condition

Optional studies

- Laboratory paper samples analysis
- Process evaluation
- Jet velocity profile measurement
- Pulsation and vibration measurements
- CD profile control process analysis